

28 Bury Avenue, Whalley Range, Manchester, M16 0AT



JP&Brimelow
ESTATE AGENTS

Offers In The Region Of £350,000




VIDEO TOUR AVAILABLE An attractive & stylishly presented, THREE BEDROOM, period, box-bay-fronted, mid-terraced property situated on a cul-de-sac off York Avenue. Positioned In a highly desirable location and within walking distance to the local shops on Clarendon Road, amenities on offer in both Chorlton & Whalley Range and close to the Ofsted 'Outstanding' Manley Park Primary School. In a fantastic position within a ten-minute walk of the Metrolink station situated on Wilbraham Road or Rye Bank Road giving you direct access to Manchester City Centre & Media City. In brief the property consists of; a vestibule, an entrance hall, a beautiful through lounge/ dining area complete with stripped and varnished floor boards, useful under stairs storage, and a fitted kitchen which has views and access out into the rear garden. To the first floor there are three good sized bedrooms and a white three-piece bathroom suite completing this delightful home. The property benefits from gas fired central heating, high ceilings, ceiling coving, original period feature, an alarm system and both a front garden and a rear South Facing private enclosed garden.





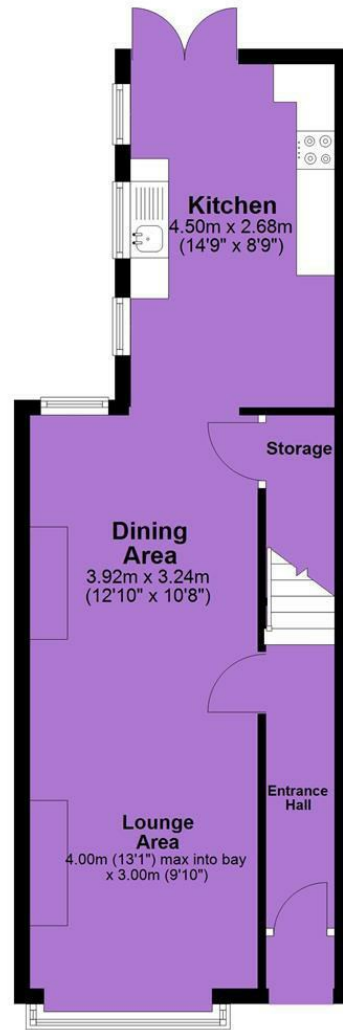
EPC Chart

Energy Efficiency Rating		Current	Potential
<i>Very energy efficient - lower running costs</i>			
(92 plus)	A		
(81-91)	B		
(69-80)	C		
(55-68)	D		
(39-54)	E		
(21-38)	F		
(1-20)	G		
<i>Not energy efficient - higher running costs</i>			
England & Wales			EU Directive 2002/91/EC 

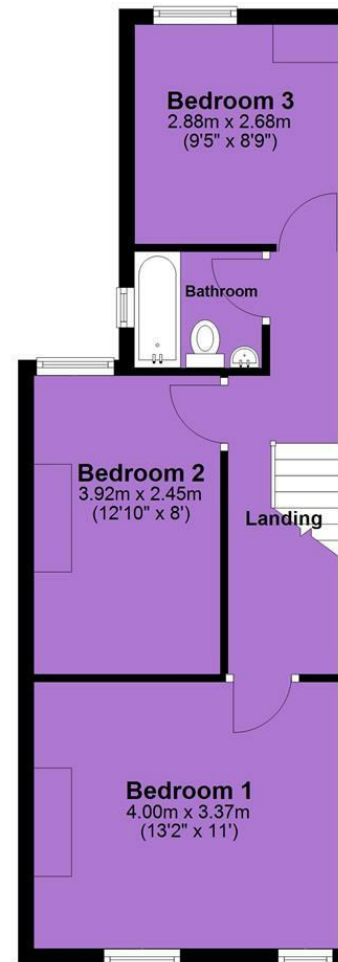


Tenure: **Freehold** Council Tax Band: **A**

Ground Floor



First Floor



JP & Brimelow Estate Agents Ltd
430 Barlow Moor Road, Manchester, M21 8AD
Tel: 0161 8822233
E: sales@jpbrimelow.co.uk www.jpandbrimelow.co.uk



JP & Brimelow
ESTATE AGENTS

NOTICE: JP & Brimelow Estate Agents Ltd for themselves and for the vendors or lessors of this property whose agents they give notice that:
(i) the particulars are set out as a general outline only for the guidance of intending purchasers or lessees, and do not constitute, nor constitute part of, an offer or contract;
(ii) all descriptions, dimensions, references to the condition and necessary permissions for use and occupation, and other details are given in good faith and are believed to be correct but any intending purchasers or tenants should not rely on them as statements or representations of fact but must satisfy themselves by inspection or otherwise as to the correctness of each of them;
(iii) no person in the employment of JP & Brimelow Estate Agents Ltd has any authority to make or give any representation or warranty whatever in relation to this property.

jpandbrimelowstateagents

@jpandbrimelow